

SAN or DAS on SBS, Easier Than It Sounds

Using Drobo® storage and the power of BeyondRAID™ for easier growth and evolution for Small Business Server (SBS) solutions

Customer Challenge

As small businesses grow they eventually reach a point where the demands of the business require a specific IT server application such as an email server, file server, database server, or web server. Operating system (OS) vendors like Microsoft have made this transition easier by providing pre-configured, cost effective versions of their server OS for small business, which enables SMBs to move to server-hosted applications faster than in the past.

As a result they are more likely to need a storage device that can be shared among several servers at the same time. But even with single servers, reliable and expandable storage is a requirement. SBS systems are almost always physically small in size, with a small number of drive bays for storage. They usually have the option for internal RAID storage for reliability, but they offer limited expandability and can be challenging to manage in response to a disk failure or for growth.

The Solution

Small business implies easy implementation, with many of the more complicated networking settings preconfigured and step-by-step wizards to complete the installation. As stated above, they include the common core applications needed by small businesses moving to a server-hosted environment. Setup of these applications is also wizard driven allowing the SMB to bring applications online without needing a great deal of expertise.

Unlike laptop or desktop environments, multiple users count on their server to be up and running all the time. So the storage device needs to be up to the task. One of the most likely components to fail in a server is a hard drive, and internal storage systems can only do so much to provide protection. External storage better meets the requirements of a Small Business Server by offering more robust protection and expandability while also being easier to manage.

Highlights

- Easy & affordable storage growth with mix and match of drives vs. lock-in with RAID
- Storage designed especially for SMBs that is easier to use than internal RAID
- BeyondRAID capabilities like thin provisioning and dual-drive redundancy built-in
- Standard connectivity to storage with GigE, no additional hardware adapters required
- Traffic-light simplicity for adding storage or replacing disks, no drive carrier or special tools
- Desktop-quiet operation with the option of a rackmount kit wherever your server is installed

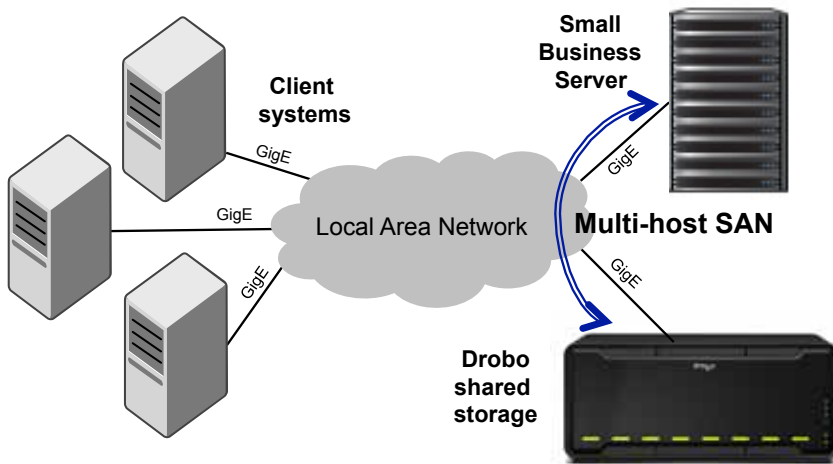
What You Will Need

Comparing approaches to storage for Small Business Server, where Drobo is always the best choice.

What You Need	Drobo Pro DAS	Internal SW RAID	Drobo model B800i SAN
8 TB of storage for SBS	48% lower cost , 4 free drive slots to expand, mix drive sizes, incl 3 TB	Limited drive bays and specific drive types, locked into decision over time	Investment in iSCSI SAN , support for virtualization with server mobility
The Big Difference	Better ROI upfront, and storage that can be used by any server or for backup in future	Storage is limited to the individual server, and cannot be used by other servers	Investment upfront enables additional servers or VMs to be deployed without additional cost for storage

Drobo Solution Summary

The ease of connecting Drobo in an SBS environment.



Where Drobo is Different

SAN storage is a must if you want to build a server environment that supports today's workloads and be ready for the next server or the addition of server virtualization. Drobo provides superior data protection with BeyondRAID technology, in a package designed for SMBs to be easy to use. Expanding storage is affordable with the ability to add any drive, and replacing a drive in the event of a failure is as easy as following red/yellow/green traffic signals. Drastically simpler than using internal RAID, thin provisioning is built in, as is the option of dual-drive redundancy for additional protection.

If the environment is not ready for SAN with Drobo model B800i, DroboPro provides the same benefits of BeyondRAID, just for a single server supporting smaller environments. Despite limited budget, the SBS storage solution can start with a DroboPro, and when scaling out servers and going to an iSCSI SAN with Drobo SAN for Business in the future, DroboPro can move to Tier 2 as backup storage. *With Drobo you always have the best storage experience eve!*

More Information

Find solution materials, including a webcast replay with an expert guest @ <http://www.drobo.com/resources/DBN-Virtualization-121410.php>

Want to try it? Free 30-day evaluation @ http://info.drobo.com/free_eval

Want to buy it? Ask your preferred reseller, or visit http://www.drobo.com/where_to_buy

How To Build It

To go from zero to SAN with a few clicks in a matter of minutes:

1. Install Drobo Dashboard on management server or any laptop or PC.
2. Deploy iSCSI SAN storage, easy one-click setup with Drobo.
3. Configure SmartVolumes, can be a one-time step with thin provisioning built-in.
4. Rescan to recognize storage, though new storage pops up automatically in most cases!
5. As you fill up storage, simply insert SATA drives (including 3 TB and larger drives) into available slots, or replace a smaller drive with a larger one.
 - a. With internal RAID, expanding with additional drives is complex, and drive slots in SBS systems are limited.
 - b. Replacing a smaller drive with a larger one is not possible or requires all drives.

drobo

1705 Wyatt Drive, Santa Clara, CA 95054 • www.drobo.com • 1.866.97.DROBO

Copyright 2011 Drobo, Data Robotics, DroboPro, Drobo, DroboStore, BeyondRAID, and Smart Volumes are trademarks of Drobo, which may be registered in some jurisdictions.

All other trademarks used are owned by their respective owners. All rights reserved. Specifications subject to change without notice.

SU-0016-00 • April 2011