



Plex is a media management system that organizes your entire collection of movies, music, and photos making them available to all media devices in the connected home and remotely accessible by Internet connected devices.

With support for streaming music, high definition video, and photo sharing, Plex is an excellent way to centralize and share all of your rich media content stored on a Drobo. This not only provides significantly increased throughput supporting multiple simultaneous streams, but also ensures that data is stored in a redundant manner protecting content from data loss due to a potential hard drive failure.



Like a Drobo, Plex does not require advanced IT knowledge to configure and interface with devices. Utilizing standards based DLNA technology, Plex offers out of the box support by nearly all network enabled televisions and media devices. On the go, MyPlex offers access to all content stored on the Drobo streaming to mobile (iOS and Android) devices using a standard broadband internet connection.



While the Plex Media Server core application is compatible with all Drobos, it previously required a host computer. With the introduction of Plex for Drobo Apps, connected devices can now stream directly from the Drobo 5N.

**NOTE** - Plex supports multiple video, audio, and photo formats. For full details on supported formats, visit their website. There are additional features that Plex offers that will not be covered in this guide.

### Topics

- **Create a Plex Media Share**
- **Enabling DroboApps and Installing Plex Media Server**
- **Configuring Plex Media Server**
- **Plex Media Center**

### What You Will Need

- Drobo 5N
- The latest Drobo Dashboard and firmware release  
<http://www.drobo.com/start/drobo-5n-start.php>
- Plex Media Center (Optional/Recommended)  
<http://www.plexapp.com/getplex/index.php>

### Prerequisites

This document assumes that a Drobo storage device has been installed, configured, and is discoverable by the Drobo Dashboard. If these steps have not been completed, follow the *Getting Started Guide* available at the URL below.

<http://www.drobo.com/start/download/doc/Drobo-5N-getting-started-en.pdf>



### Video formats and Transcoding

While the 5N supports streaming multiple high definition videos simultaneously, it is not possible to transcode HD video in real-time. For best user experience, Drobo recommends using a Plex enabled device over DLNA as it will allow for native playback of video content stored on the Drobo.

For mobile devices, video content will need to be converted to a suitable format before it can be accessed and streamed to a MyPlex account. For more information on transcoding and DLNA support, consult the URL below.

<http://wiki.plexapp.com/index.php/FAQ: Plex Media Server and NAS>

### Create a Plex Media Share

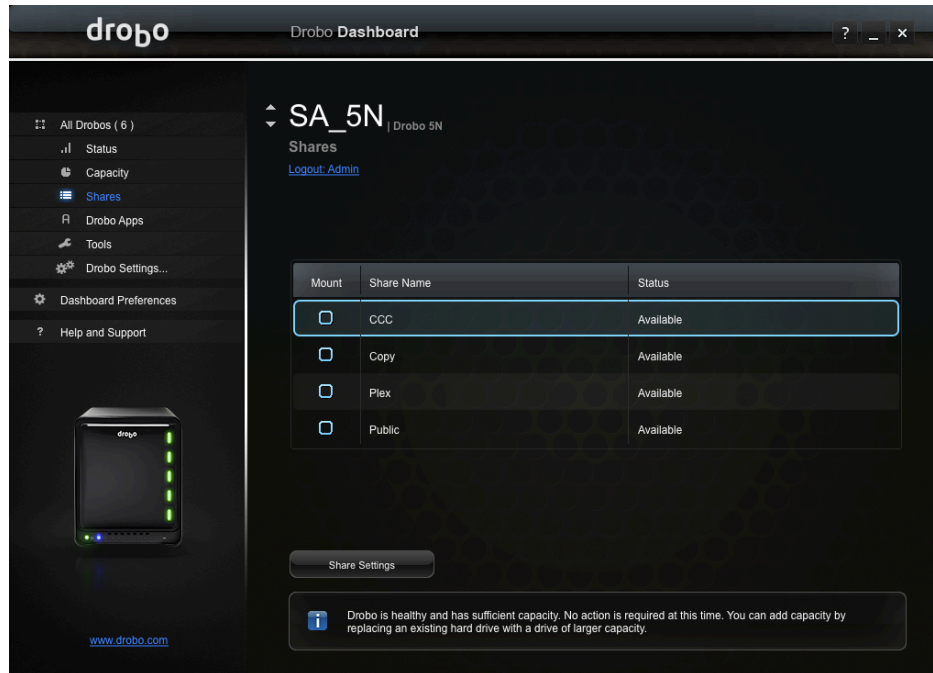
#### STEP 1



Load the Drobo Dashboard and select the 5N.



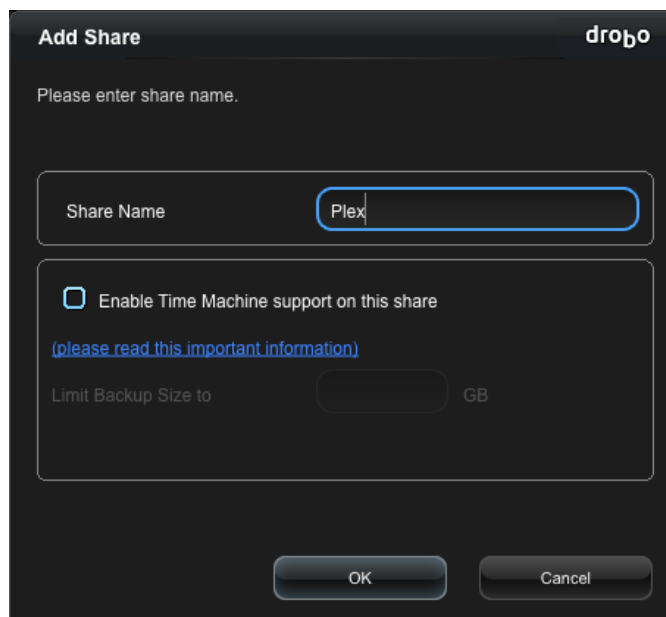
### STEP 2



On the **Shares** tab, click the **Share Settings** button to create a network share that will be used with Plex.

**NOTE** – While Plex does not require a dedicated share, it is recommended. This configuration limits what data will be automatically indexed and added to Plex.

### STEP 3



Enter a name for the share that will be used by Plex.

In this example the share name **Plex** will be used.

Click **OK** to continue.



### STEP 4

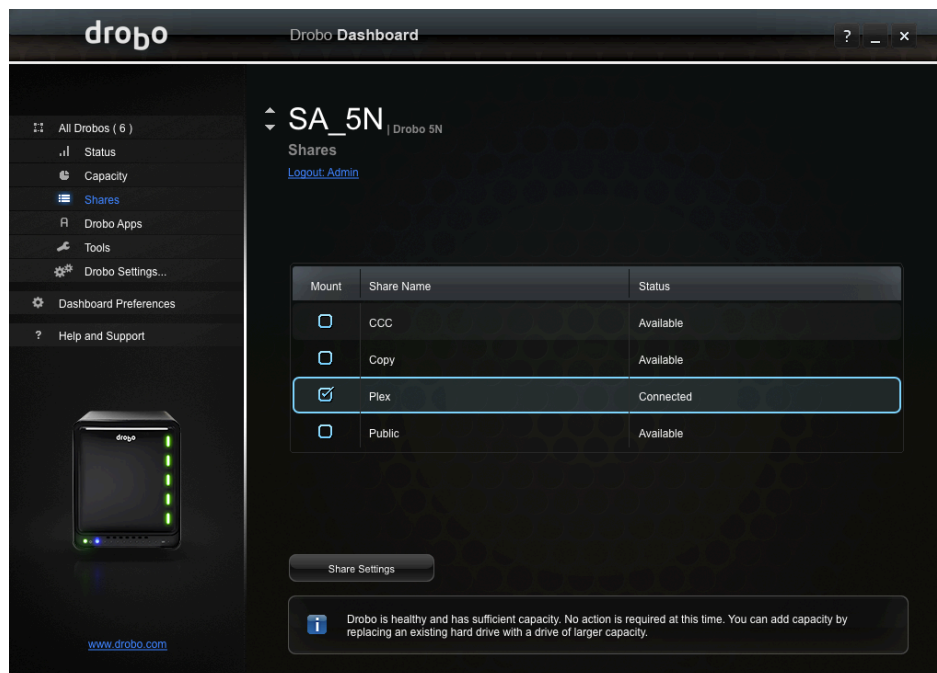


Configure user access for the Plex share and click **OK** to complete the wizard.

**NOTE** – User access only affects share level access.

*Plex does not include user level access for streaming clients. All streaming clients can see all data added to Plex.*

### STEP 5



Click on the newly created share to map it to the host computer.

Copy video, audio, and image content to the newly created Plex share.

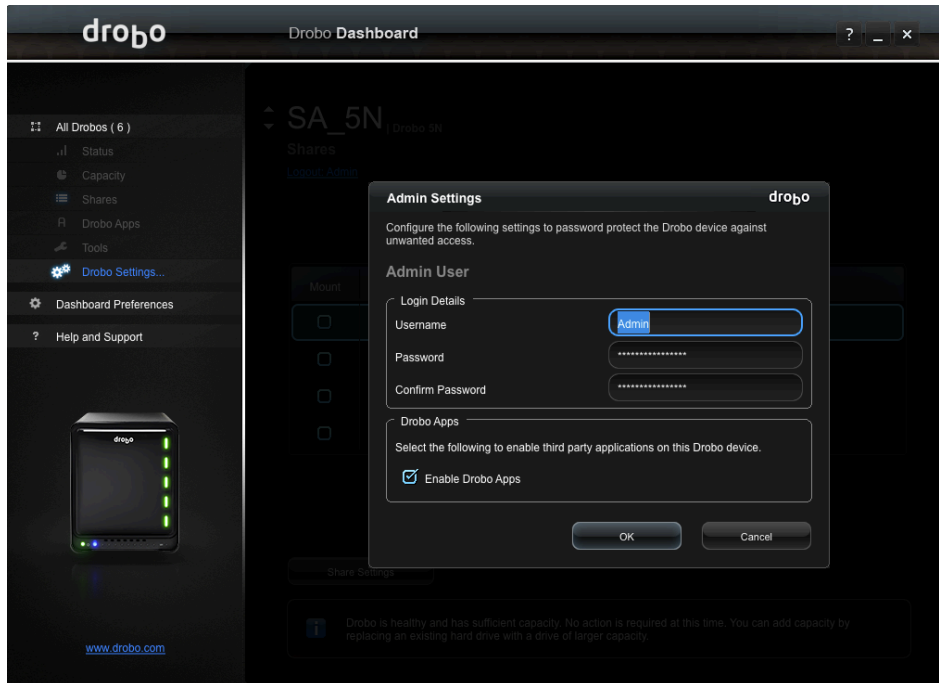
It is recommended that a separate folder is used for each media type.

**NOTE** – Drobo Dashboard on Windows hosts will prompt for a drive letter before mapping a share.



## Enabling DroboApps and Installing Plex Media Server

### STEP 1



Click the **Drobo Settings** link in the left column and then select **Admin Settings**.

Select the **Enable Drobo Apps** checkbox and then click **OK**.

Once DroboApps support has been enabled, a list of available applications will be automatically populated.

### STEP 2



Click the **Drobo Apps** link in the left column and then select **Plex** from the list of Drobo Apps.

Click the **Install** button to begin the installation process.

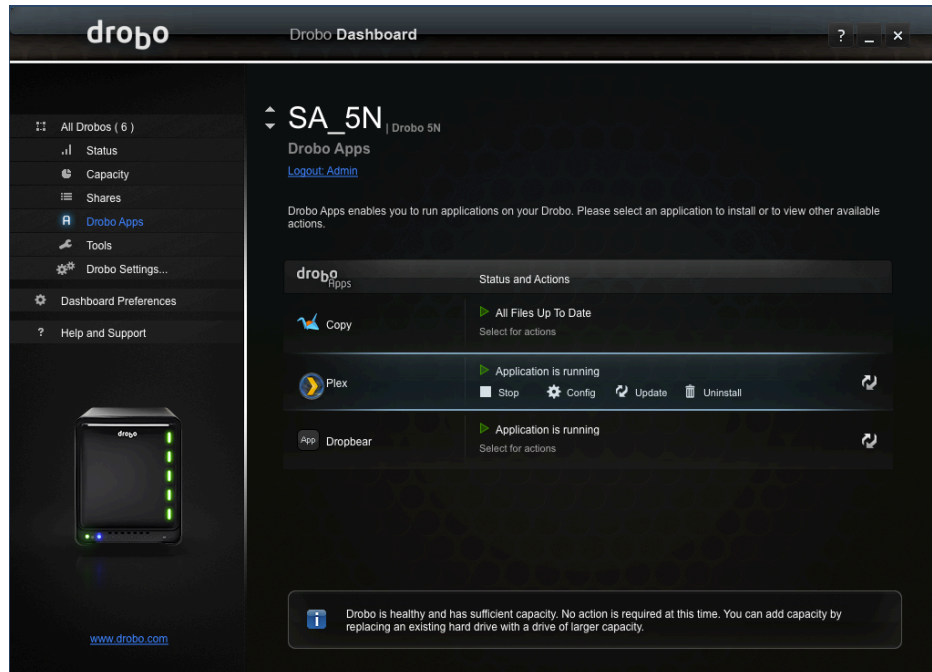
Plex will be automatically downloaded from Drobo and installed on the 5N.





## Configuring Plex Media Server

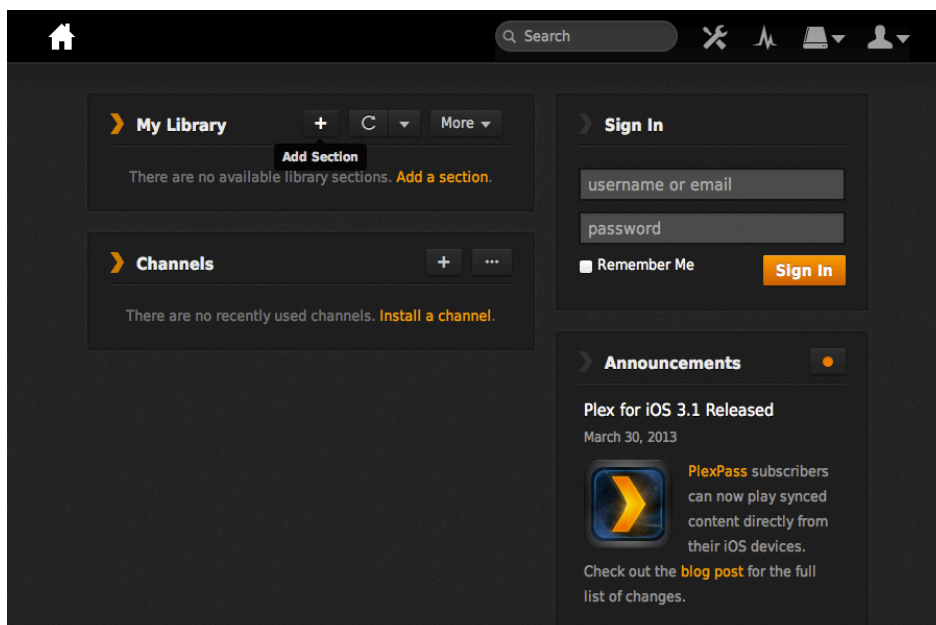
### STEP 1



Once the Plex installation has completed, click the Config icon to begin the initial configuration process.

A browser window will be launched and the Plex Media Server interface loaded.

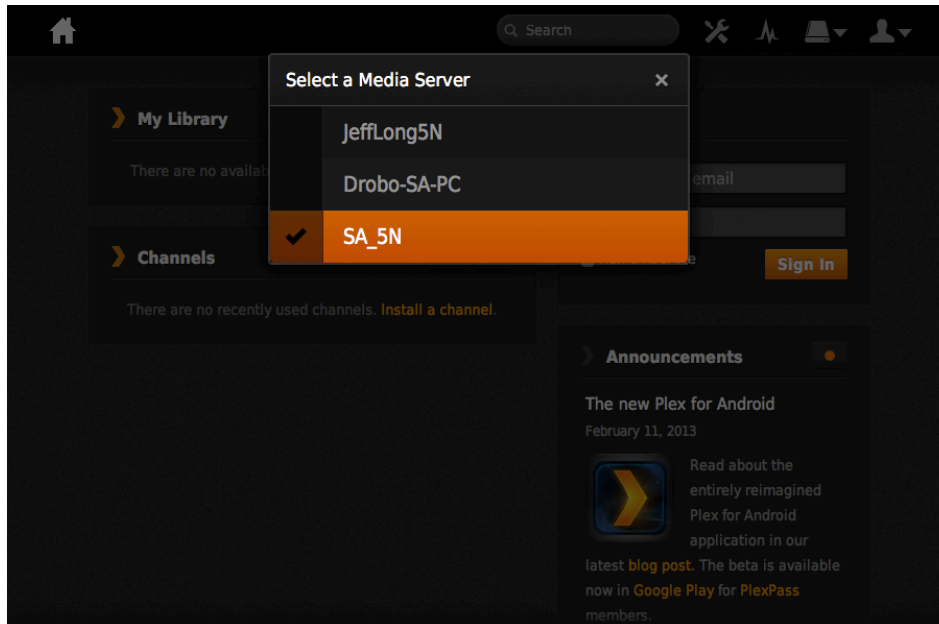
### STEP 2



To add media to the Plex library, click the + **(Add Section)** button under **My Library**.



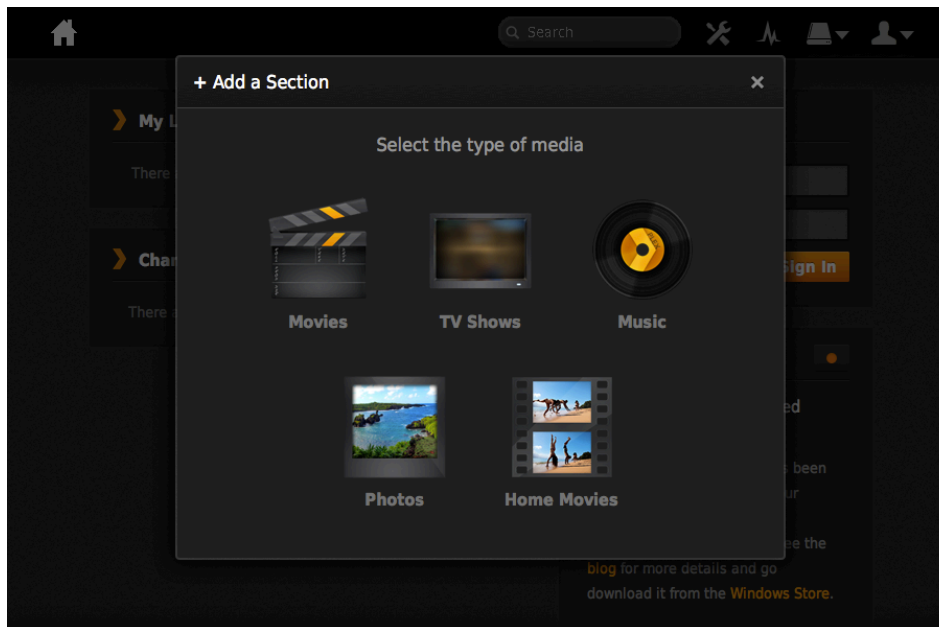
### STEP 3



Select the Drobo from the list of Media Servers.

**NOTE** – If no other Plex servers exist on the network, the Drobo will be automatically selected.

### STEP 4



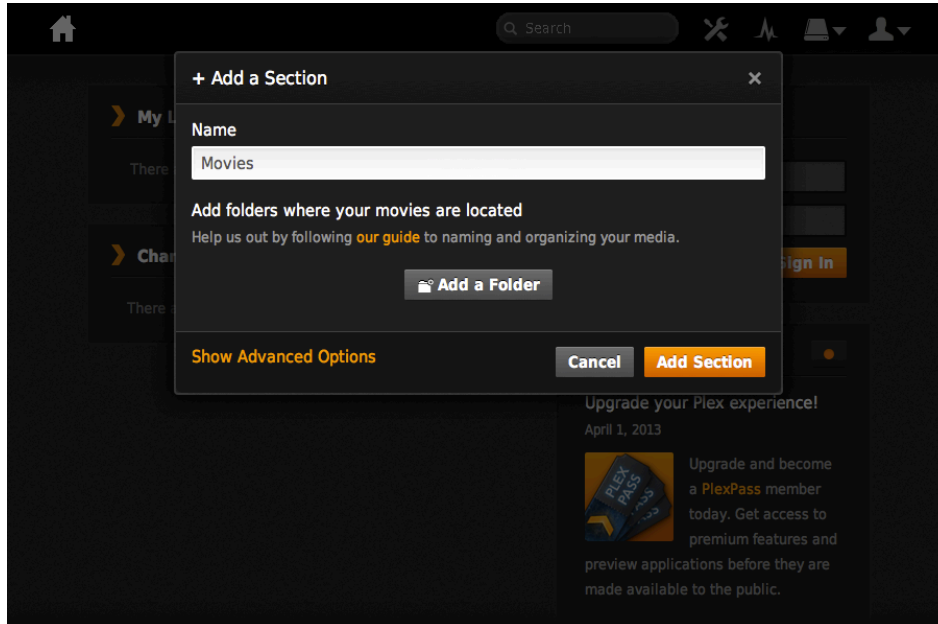
Select the media type that will be added to the section.

**NOTE** – This How-To only covers adding Movies to Plex.

Repeat the steps in this section to add other types of media or additional locations of the same media type.

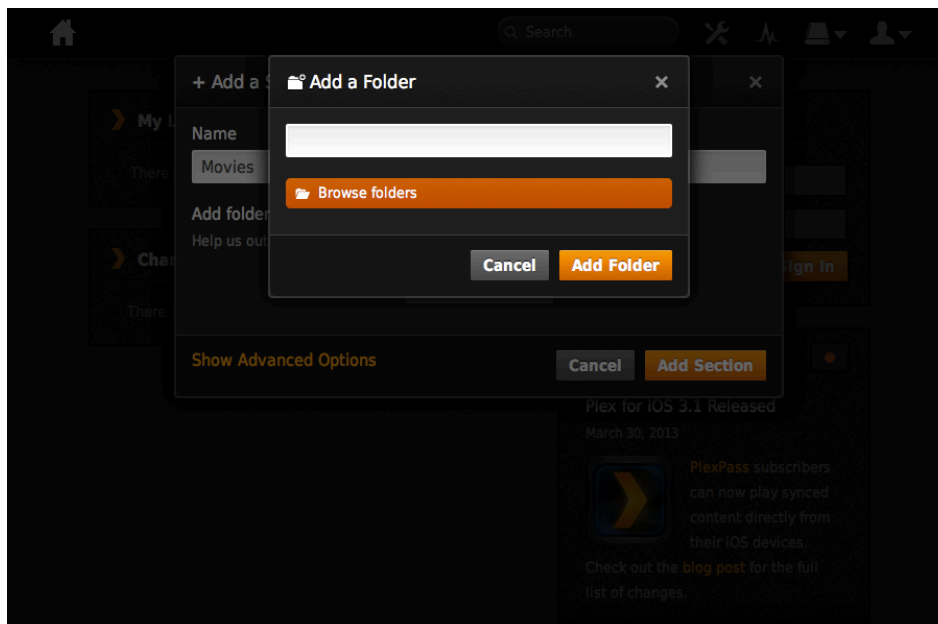


### STEP 5



Enter a description in the **Name** field that characterizes the content to be added and then click **Add a Folder**.

### STEP 6

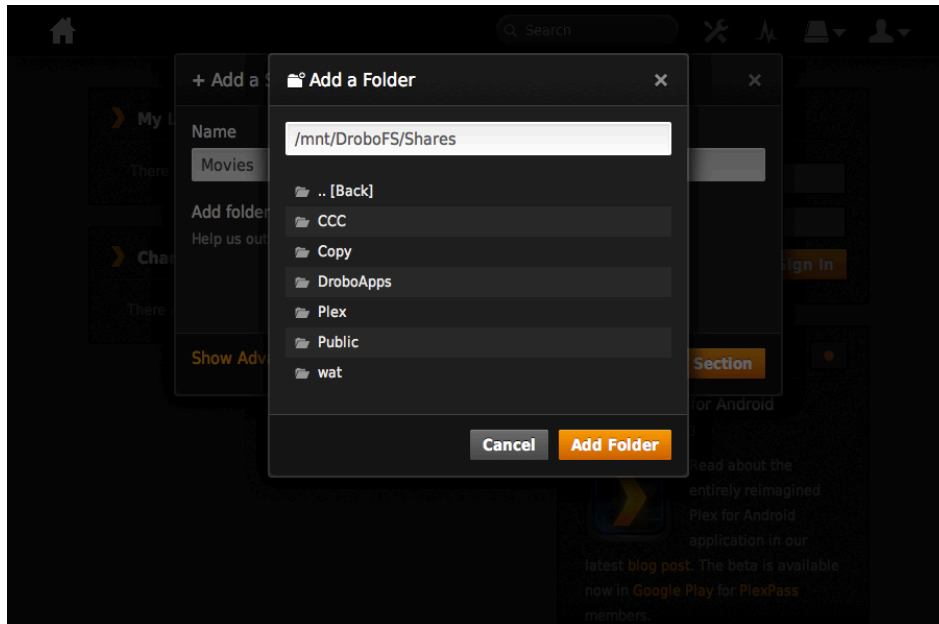


Click **Browse Folders** to navigate to the Plex share.



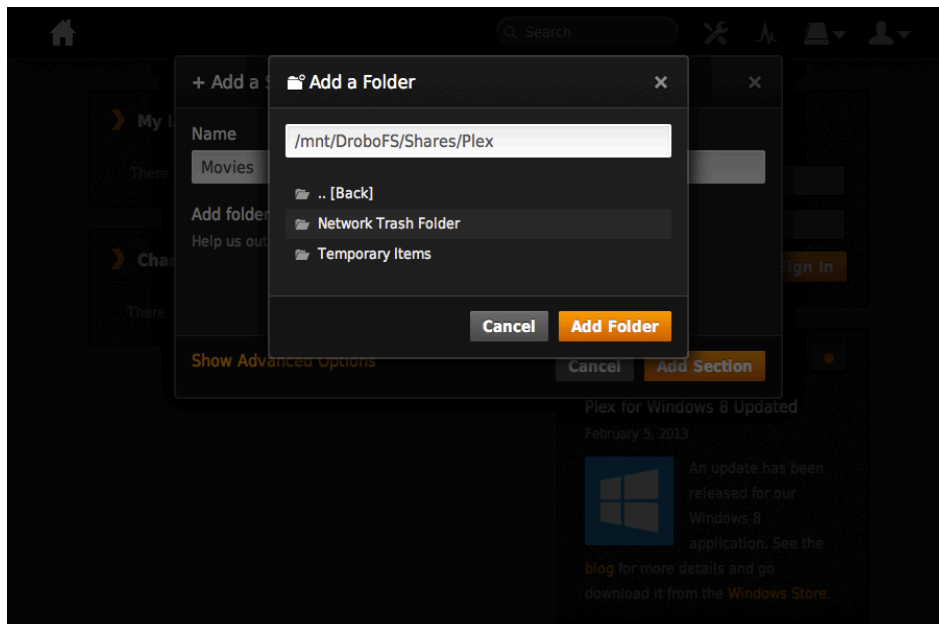


### STEP 7



Select the newly created **Plex** share from the list of all shares on the Drobo and click **Add Folder**.

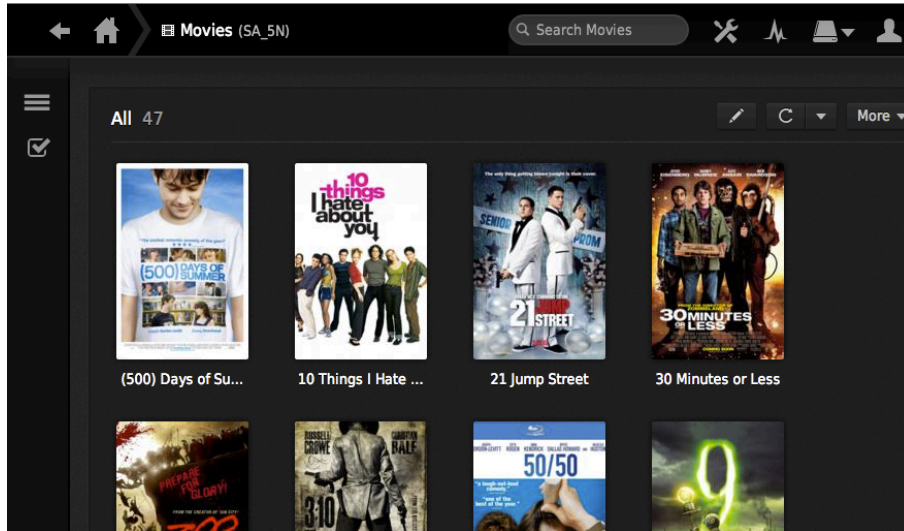
### STEP 8



Verify the Section name and path are correct and click **Add Section**.



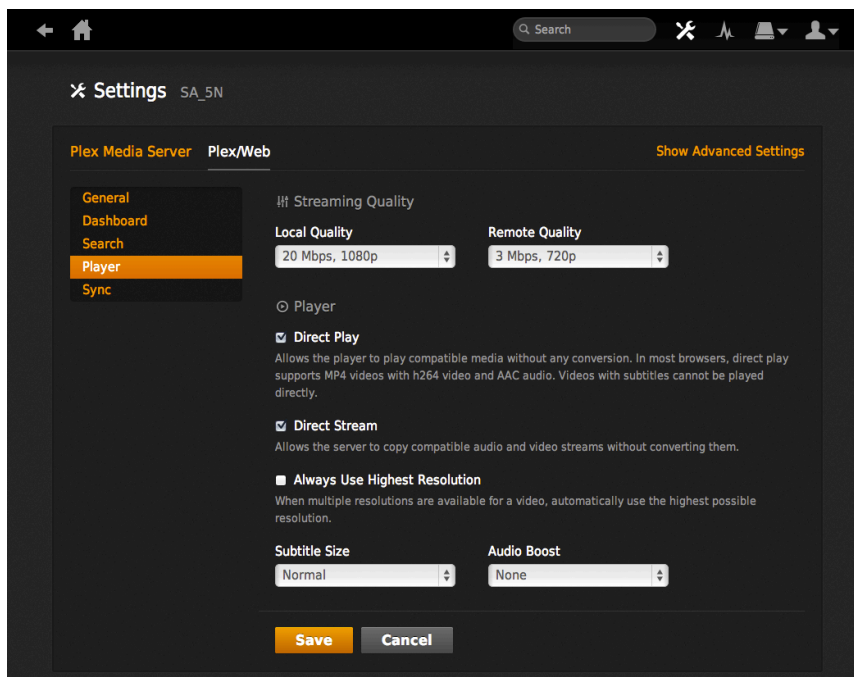
### STEP 9



Plex will now begin indexing the media in the newly created Section.

**NOTE** – Depending on the amount and type of media, the indexing process can take considerable time. As items are processed the interface will automatically update.

### STEP 10



Click on the  icon, select **Plex/Web** and then select **Player**.

Under **Local Quality**, change the dropdown to **20Mbps, 1080p** and click **Save**.

Plex Media Server is now installed and ready to use. While Plex content can be accessed from a web browser, viewing content via the Plex Media Center (outlined in the next section) offers a superior user experience.



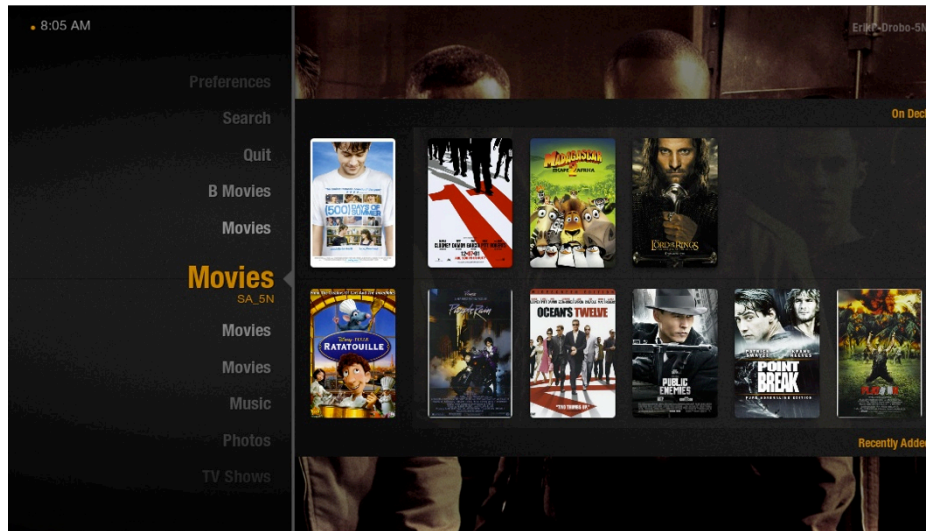
### Plex Media Center

Download and install Plex Media Center for the Mac or PC from the URL below.

<http://www.plexapp.com/getplex/index.php>

**NOTE** - Plex Media Server is optimized for a fullscreen user experience on a computer or television. To exit or return to fullscreen mode, press “\” in OSX or “alt-enter” in Windows.

#### STEP 1



Launch Plex Media Server

Once loaded, the Plex Media Server running on the Drobo will be automatically detected.

Select **Movies** and press **enter**.

#### STEP 2



Select **All Movies** and press **enter**.

A list of all movie content added to the Plex Media Server in the previous step will be displayed.

Select a movie and press **enter** to begin watching.

Drobo • 2460 North First Street, Suite 100, San Jose, CA • [www.drobo.com](http://www.drobo.com) • 1.866.97.DROBO  
Copyright 2013 Drobo, Inc. Data Robotics, Drobo, Drobo5N, and Smart Volumes are trademarks of Drobo, Inc., which may be registered in some jurisdictions. All other trademarks used are owned by their respective owners.  
All rights reserved. Specifications subject to change without notice. • May 2013