



The Drobo 5N provides easy, affordable networked attached storage for the connected home or small office. Copy, a new cloud-based service from Barracuda, provides users with the easiest place to store, protect and share critical information. Through the use of Drobo Apps, the addition of the Copy cloud functionality to the Drobo 5N enables:



- **File sharing without limitations** – Anything stored on the Drobo device that has been shared with Copy can be accessed without the hassle of file attachments. Unlike email attachments with size limitations, Copy allows users to upload and share files of any size, including 1080p videos and photographs.
- **Remote file access** – Drobo users will be able to access their shared files and folders from any location and any device.
- **Unlimited online backup** – Users who purchase a Drobo device will have the option of setting up a new Copy account or connecting with an existing Copy account directly from one of the Drobo configuration screens. The Copy accounts provide 15GB of storage capacity free of charge, and users can license additional storage capacity directly from the copy.com website.
- **Comprehensive client support** – Drobo users can easily access information from operating systems including Windows, OSX, and Linux, or from mobile devices including Apple iPad and iPhone, Android, and Microsoft Surface.



Topics

- Create a Copy Cloud Synchronization Share
- Enabling and Installing Drobo Apps
- Configuring and Using Copy



What You Will Need

- Drobo 5N
- The latest Drobo Dashboard and firmware release
<http://www.drobo.com/start/drobo-5n-start.php>
- Copy user account
<https://www.copy.com>

Prerequisites

This document assumes that a Drobo storage that has been installed, configured, and is discoverable by the Drobo Dashboard. If these steps have not been completed, follow the *Getting Started Guide* available at the URL below.

<http://www.drobo.com/start/download/doc/Drobo-5N-getting-started-en.pdf>

Create a Copy Cloud Synchronization Share

STEP 1



Load the Drobo Dashboard and select the 5N



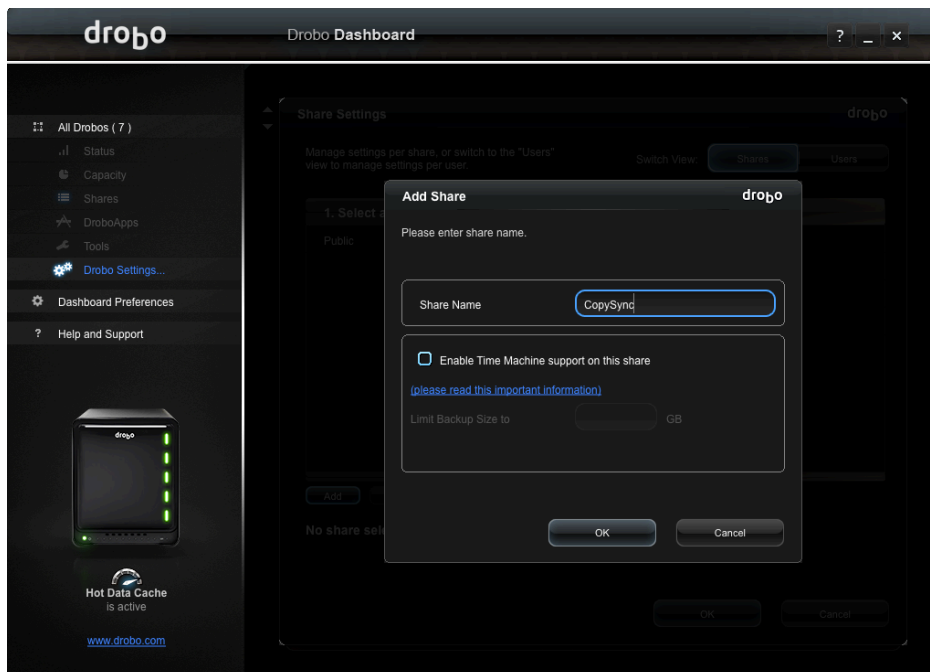
STEP 2



On the **Shares** tab, click the **Share Settings** button to create a share to be used with Copy

NOTE – While Copy does not require a dedicated share, it is recommended to more easily distinguish between on-site and cloud synchronized storage

STEP 3

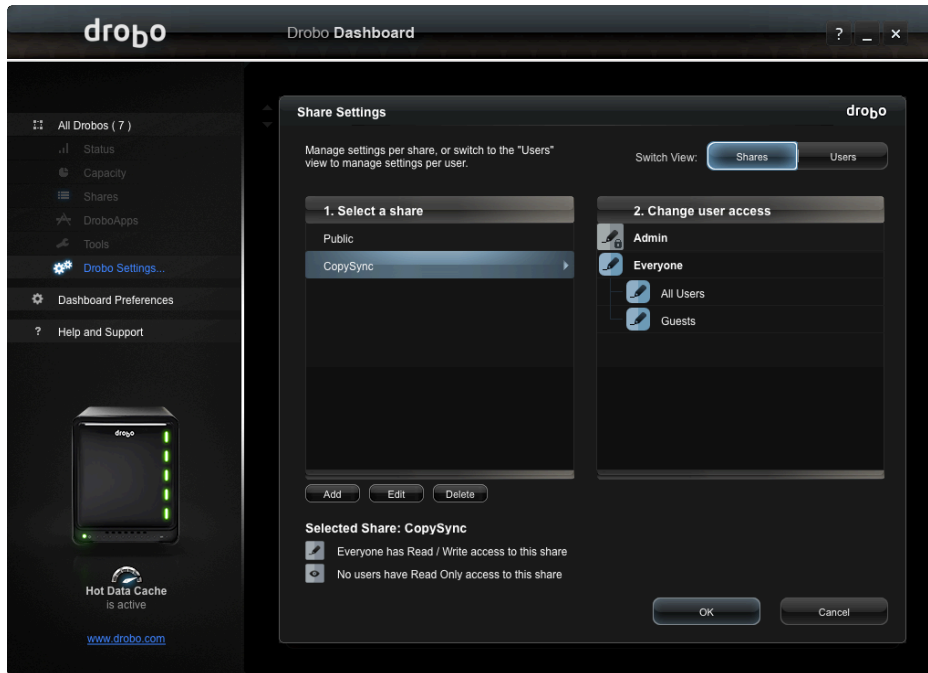


Enter a name for the Copy share.

In this example the share name **CopySync** will be dedicated for only data to be synchronized with Copy.



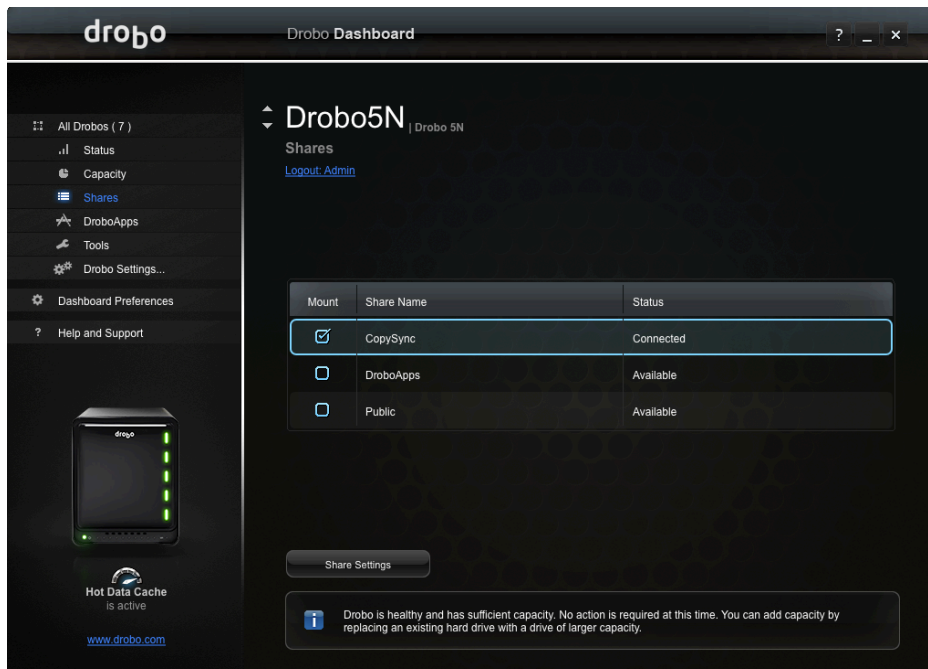
STEP 4



Configure user access for the copy share and click **OK** to complete the wizard.

Note – User access only affects local access to the Drobo. External access permissions must be set on the Copy.com website.

STEP 5



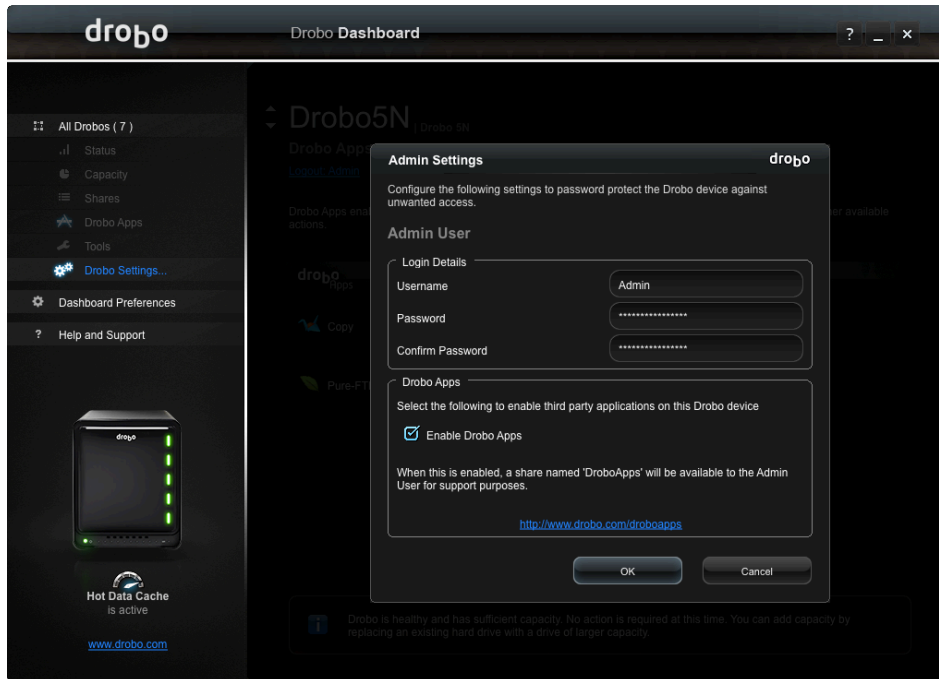
Click on the newly created share to map it to the host computer.

NOTE – Dashboard Running on a Windows hosts will prompt for a drive letter selection.



Enabling and Installing Drobo Apps

STEP 1



Click the **Drobo Settings** link in the left column and then select **Admin Settings**.

Select the **Enable Drobo Apps** checkbox and then click **OK**.

Once Drobo Apps support has been enabled, a list of available applications will be automatically populated.

STEP 2

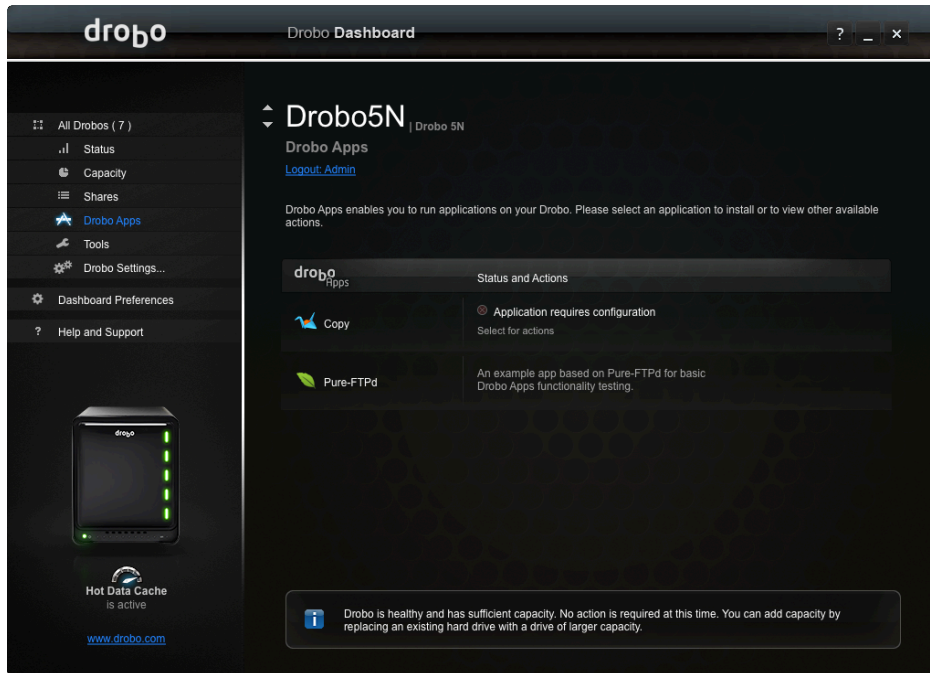


Select **Copy** and click the **Install** button to begin the installation process.

Copy will be automatically downloaded from Drobo and installed on the 5N.



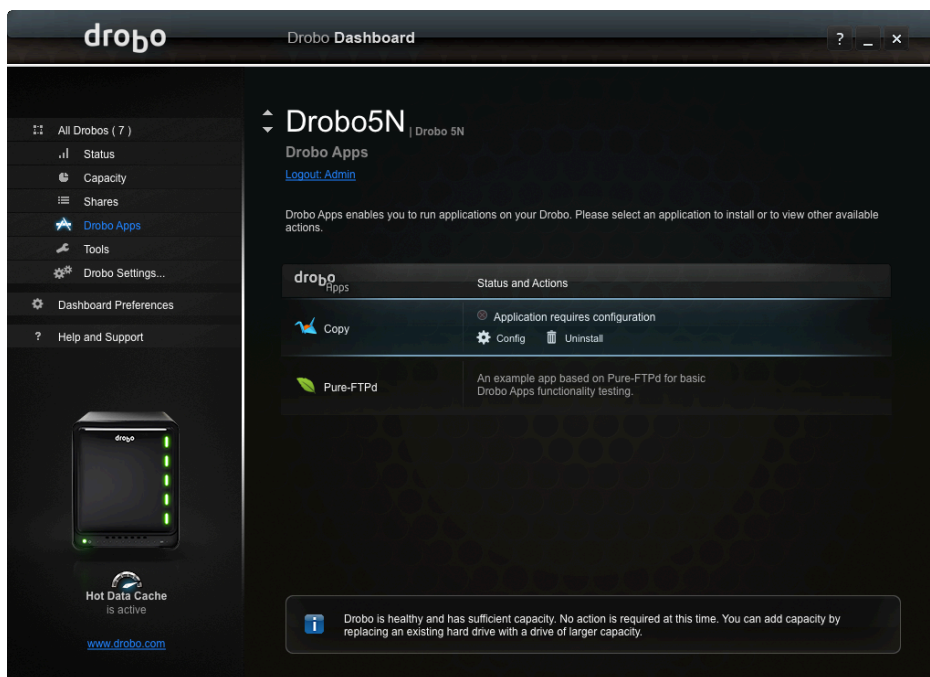
STEP 3



Copy is now installed and ready for initial configuration.

Configuring and using Copy

STEP 1



Select **Copy** application and then click on the **gear icon** to begin the initial configuration of Copy.

NOTE –The Dashboard will launch the default web browser to perform the Copy configuration.



STEP 2

The screenshot shows a web browser window titled "Copy Drobo App" with the URL "172.24.8.60:8080/index.php". The interface features the Copy logo (a stylized bird) and the text "Version 1.0.0". Below the logo, there are three input fields: "User Email" with the value "mglaves@drobo.com", "Password" with masked characters, and "Copy Folder Location" with the value "CopySync". To the right of these fields are two links: "Sign Up" and "Visit Copy Website". At the bottom of the form, there are "Cancel" and "OK" buttons. The "drobo Apps" logo is visible in the bottom left corner.

If you do not already have a Copy account, click on the **Sign Up** link to create one.

Enter the credentials for your Copy account and select the share that was created in the first section of this document.

Click **OK** to active Copy.

STEP 3

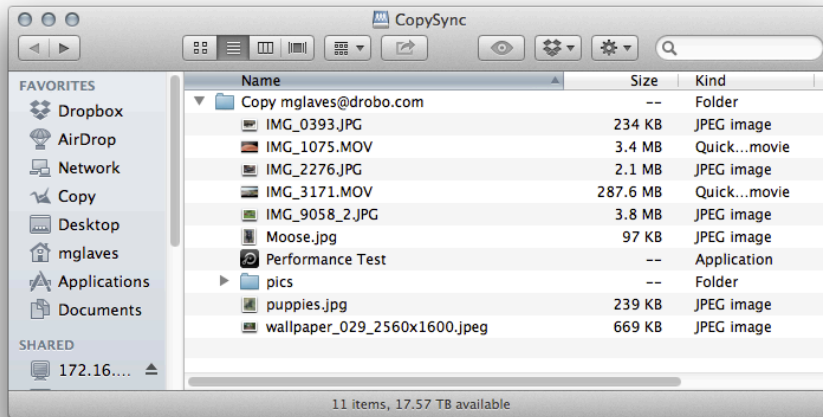
The screenshot shows the same web browser window as in Step 2, but now displaying a success message: "Successfully authenticated with Copy." Below this message, it says "Logged into Copy as mglaves@drobo.com" and includes a "Log Out" link. The "Sign Up" and "Visit Copy Website" links are still present. At the bottom right, there is a "Close" button. The "drobo Apps" logo remains in the bottom left corner.

Verify that Copy has been successfully authenticated.

If an authentication error is received, verify credentials by logging into the Copy.com website.



STEP 4



Open the share **CopySync** previously mapped to the computer and open the newly Created Copy directory

Synchronization of any data currently in the Copy account as well as any new data copied into the folder will now occur automatically.

NOTE – Not all data copied to the CopySync folder will be synchronized. Only data stored in the Copy <useraccount> folder is sent to the cloud

Drobo • 2460 North First Street, Suite 100, San Jose, CA • www.drobo.com • 1.866.97.DROBO
Copyright 2013 Drobo, Inc. Data Robotics, Drobo, DroboElite, DroboPro, BeyondRAID, and Smart Volumes are trademarks of Drobo, Inc., which may be registered in some jurisdictions. All other trademarks used are owned by their respective owners.
All rights reserved. Specifications subject to change without notice. • March 2013