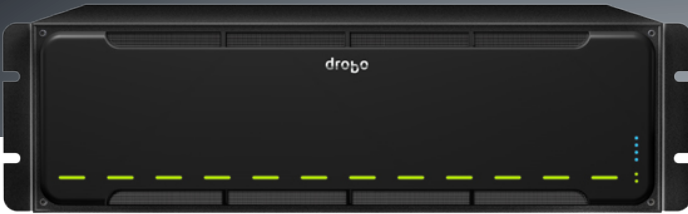


# drobo

## Drobo model B1200i



### Built on proven BeyondRAID technology, this is application-optimized storage for small and medium sized businesses

Built on proven BeyondRAID™ technology, coupled with new and innovative Automated Data-Aware Tiering, the Drobo B1200i delivers a level of automation and technical sophistication usually reserved for more expensive enterprise solutions. All in a product as easy to use as a Drobo.

The Drobo B1200i is optimized for SMB IT to provide reliable, high-performance, and self-optimizing storage for server virtualization, email, and data protection. It integrates seamlessly into your TCP/IP network infrastructure and utilizes the industry-standard iSCSI protocol to provide powerful, yet simple, consolidated storage for your IT environment.

#### BeyondRAID Technology

A Drobo B1200i iSCSI array can hold up to 36TB of raw storage and beyond. To add capacity, simply insert a new hard drive or replace your smallest drive with a larger one, even when all drive bays are full. Unlike traditional RAID, the BeyondRAID technology in Drobo enables you to leverage different drive capacities, allowing for continuous expansion as larger drives become available. With Drobo, expansion is automatic and instantaneous and access to data is always maintained, all while protecting you from two simultaneous drive failures.

#### Automated Data-Aware Tiering

Automated Data-Aware Tiering allows businesses to consolidate storage resources and share that storage across all connected servers and their applications. The Drobo B1200i moves beyond manually tuning an array for applications that have different storage requirements. Automated Data-Aware Tiering leverages high-

capacity hard disk drives (HDDs) paired with high-performance solid state drives (SSDs)\* to deliver application-optimized storage that requires no manual tuning.

(\* Automated Data-Aware Tiering will support SSDs in a software update targeted for Q1 2012.)

#### Smart Volumes & Thin Provisioning

Create new volumes up to 16TB in seconds and manage them over time with ease. The innovative and time-saving Smart Volumes™ management technology with Thin Provisioning integrated into the Drobo B1200i allows volumes to pull storage from the common pool of disks rather than a specific physical disk allocation. The labor of resizing and migrating volumes is replaced with the simplicity of intelligent engineering.

#### Optimizing Business Applications

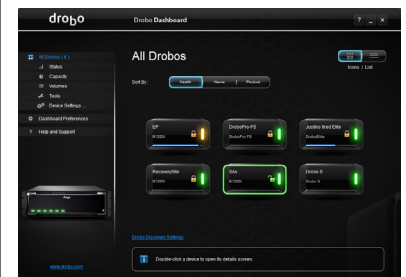
Similar to business applications, Drobo is ideal for building your first server virtualization cluster, highly available email server, or scalable backup server. Drobo technology has been certified for VMware vSphere, Citrix XenServer, Symantec Backup Exec, and Veeam Backup environments.

#### Designed for IT Environments

The B1200i is the first Drobo with serviceable modular components: removable controller card; dual-redundant, hot-swappable power supplies; and a hot-swappable cooling fan unit. You can source field replaceable units in advance in case of a single hardware component failure, to ensure high uptimes. This delivers the higher level of availability demanded by virtualized IT environments.

#### Drobo Dashboard

Drobo Dashboard is the single tool to centrally manage all of your Drobos. Drobo Dashboard displays status as if all of your Drobos were right in front of you with the same status lights and capacity gauge that are on the front panel. All administration tasks are a single click away and there's even a built-in data protection tool called Drobo Copy to easily copy data to and from your Drobo. Simply, it's the easiest way to configure and manage business-class storage.



## Specifications

<b>Drives</b>	<ul style="list-style-type: none"> <li>12 drive bays</li> <li>3.5" SAS-1/SAS-2 drives</li> <li>3.5" SATA I / SATA II / SATA III drives</li> </ul>	<b>Connectivity</b>	<ul style="list-style-type: none"> <li>3 x 100 / 1000 Mbps Ethernet port for data (iSCSI)</li> <li>1 x 100 / 1000 Mbps Ethernet port for management</li> </ul>
<b>Operating System Support</b>	<ul style="list-style-type: none"> <li>Mac OS X Server 10.5.8 or later (Intel Only); Mac OS X Server 10.6.8 or later (Intel Only)</li> <li>Windows Server 2003 R2 SP1 32 and 64 bit; Windows Server 2008 R2 SP1 64 bit</li> <li>Red Hat Enterprise Linux 6 (Intel only)</li> <li>VMware vSphere 4.1.x (ESXi)</li> <li>Citrix XenServer 5.6</li> </ul>		
<b>Ethernet Features</b>	<ul style="list-style-type: none"> <li>Connection failover</li> <li>Jumbo frames (up to 9000 bytes MTU)</li> </ul>	<b>Network Protocols</b>	<ul style="list-style-type: none"> <li>iSCSI</li> <li>CHAP Authentication</li> </ul>
<b>File System Options</b>	<ul style="list-style-type: none"> <li>Windows: NTFS, FAT32</li> <li>Mac OS X: HFS+</li> <li>Linux: ext3</li> <li>VMware vSphere: VMFS</li> <li>Citrix XenServer: LVM</li> </ul>	<b>Management</b>	<ul style="list-style-type: none"> <li>Drive bay indicator lights, capacity gauge, status lights</li> <li>Drobo Dashboard version 2.1 or later</li> </ul>
<b>Power and Cooling</b>	<ul style="list-style-type: none"> <li>Dual, redundant, hot-swappable power supplies: AC Input 100/240 VAC, 8/5 A, 50/60 Hz</li> <li>Redundant, hot-swappable cooling fan unit</li> </ul>	<b>Warranty</b>	One (1) year warranty in the US or outside the EU, or two (2) year warranty in the EU (as provided by EU law)
<b>Size &amp; Weight</b>	<ul style="list-style-type: none"> <li>Width: 17.17 in (436.1 mm)</li> <li>Height: 5.20 in (132.1 mm); 3U (rack units)</li> <li>Depth: 21.85 in (555.0 mm)</li> <li>Weight: 47 lb (21.3 kg)</li> </ul>	<b>Environmentals</b>	<ul style="list-style-type: none"> <li>Operating Temperature: 10°C–35°C (50°–95°F)</li> <li>Non-operating Temperature (storage): -10°–60°C (14°–140°F)</li> <li>Operating Humidity: 20%–80%</li> </ul>
<b>Box Contents</b>	<ul style="list-style-type: none"> <li>Drobo B1200i</li> <li>Rack mount installation guide</li> <li>Rack mount parts</li> <li>2 x 6 ft power cords</li> <li>Getting Started Guide (printed)</li> <li>Resource CD, which includes Drobo Dashboard application</li> </ul>	<b>Certifications</b>	<ul style="list-style-type: none"> <li>Environmental: RoHS, WEEE, REACH</li> <li>Regulatory: FCC Part 15 Class A; Canada ICES-003 Class B; CE Mark; CISPR22:19973rd Edition Class B; MIC Mark; VCCI Approval to V.3; BSMI Approval to CNS13438; ACA Approval to AS/NZS 3548</li> <li>Safety: UL, cUL, TUV, CB</li> </ul>

## How to Choose the Right Drive

Drobo gives you the flexibility to use a wide variety of drive types and capacities, but the process of choosing the ideal drive is challenging. To find out which drive is right for the Drobo B1200i, visit: [www.drobo.com/products/choose-drive.php](http://www.drobo.com/products/choose-drive.php)

## Capacity Calculator

Use an interactive Drobo Capacity Calculator to estimate the amount of data storage available in the B1200i.

Visit: [www.drobo.com/products/capacity-calculator/index.php](http://www.drobo.com/products/capacity-calculator/index.php)

## More Information

For more on Drobo, including a demo video, visit: [www.drobo.com/how-it-works/index.php](http://www.drobo.com/how-it-works/index.php)

Read about Drobo Technology Innovation @ [info.drobo.com/ebook](http://info.drobo.com/ebook)

Want to buy it? Ask your preferred reseller or visit: [www.drobo.com/where-to-buy/index.php](http://www.drobo.com/where-to-buy/index.php)

# drobo

2460 North First Street, Suite 100, San Jose, CA 95131 • [www.drobo.com](http://www.drobo.com) • 1.866.97.DROBO

Copyright 2011 Drobo, Inc. Data Robotics, Drobo, DroboPro, DroboElite, DroboStore, BeyondRAID, and Smart Volumes are registered trademarks of Drobo, which may be registered in some jurisdictions. All other trademarks used are owned by their respective owners. All rights reserved. Specifications subject to change without notice.

DS-0054-001 • October 2011