

# Drobo How-To Guide

## Use CrashPlan for Offsite Backup of Drobo Direct-Attached Storage



Protecting data is an everyday problem that too many people are not addressing. Using a storage device that protects you from hard drive failure is a great start, but it does not provide full protection against a major disaster, such as fire, flood, or theft. Truly dependable data backup means *backing up your storage both onsite and offsite*. The best practice for any backup is “3 – 2 – 1” for a “belt and suspenders” level of protection:

- 3 copies of any data that you really want to keep
- 2 different devices/media, different devices protecting from device failure
- 1 location specifically offsite protecting from site loss

You may already use your Drobo as a backup device. A second Drobo works very well if your primary data is also on a Drobo. Cloud backup is not always practical for protecting large amounts (terabytes) of data due to the cost of cloud storage and the rate at which you can upload and download data. However, it is possible to use another Drobo you own at an offsite location to store large amounts of data without the recurring costs or storage limits. Then you can use cloud storage to protect really valuable data with an additional copy.

With CrashPlan, it is very easy to configure and perform offsite backup. CrashPlan also enables something called “social backup,” where Drobo storage at the site of a friend or family member can be the destination for offsite backups. CrashPlan has several offerings including business and cloud services. This document focuses specifically on the free version of CrashPlan (which doesn’t include cloud backup), but can also be used as a general guide for CrashPlan + and CrashPlan Pro.



## Topics

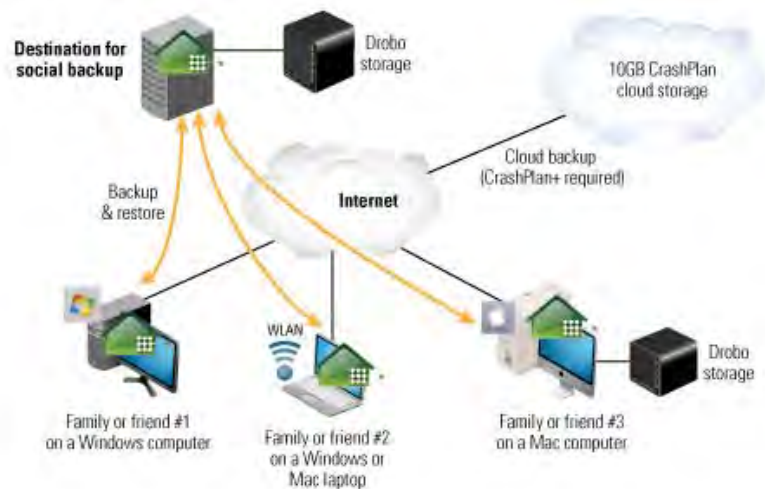
- What you will need
- Back up your computer to an onsite Drobo using CrashPlan
- Back up to another Drobo or offsite storage
- Configure social backup between your storage and your friends

## What You Will Need

- Drobo direct-attached storage\*
- Mac or Windows computer connected to Drobo\*
- Free CrashPlan account
- CrashPlan software installed on your computer
- High-speed Internet access\*\*

\* Computer and Drobo must be powered on to perform backups or receive social backups.

\*\* High-speed Internet access is required if you wish to back up one Drobo to another offsite.





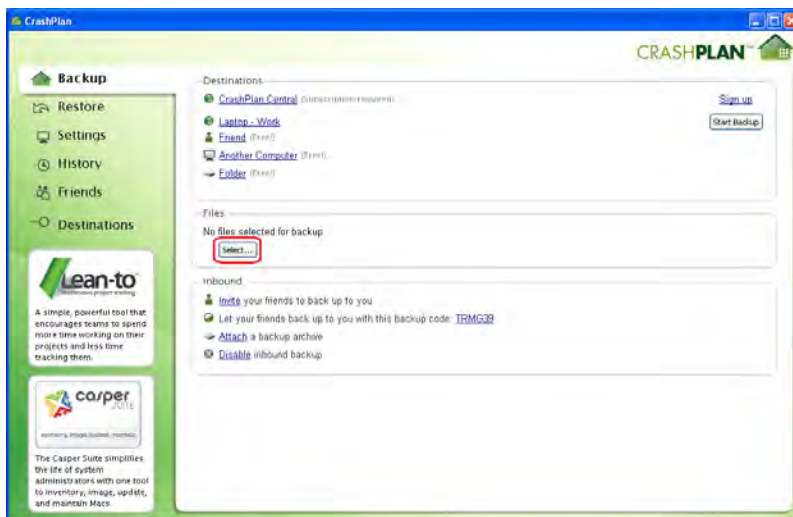
### Backing Up Your Computer to an Onsite Drobo Using CrashPlan

You may already be using Drobo to back up local drives in your computer using one of many other methods. In this case, skip to the next section for setting up offsite backup. Complete the steps in this section to back up storage in a computer to an onsite Drobo using CrashPlan.

#### STEP 1

Download and install free backup software, and create you CrashPlan account as a part of the installation process. Software is available @ <http://www.crashplan.com/consumer/download.html>.

#### STEP 2



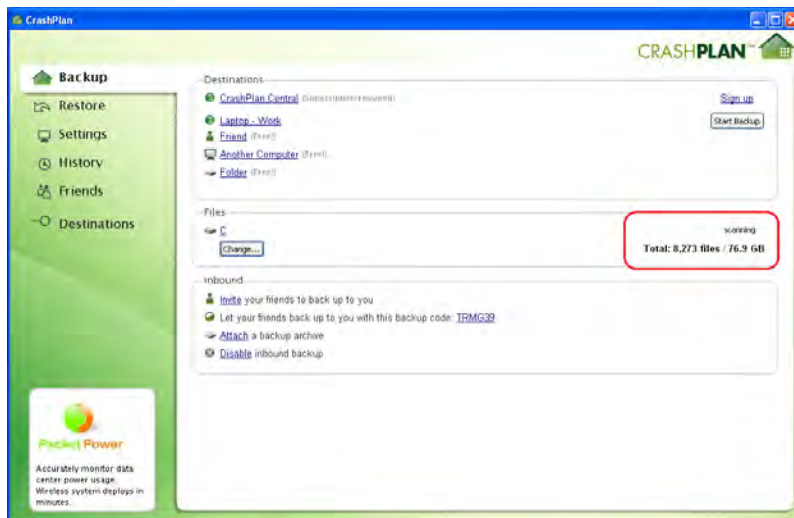
Launch CrashPlan, and click the **Select** icon in the Files window to choose the files you wish to back up.



### STEP 3



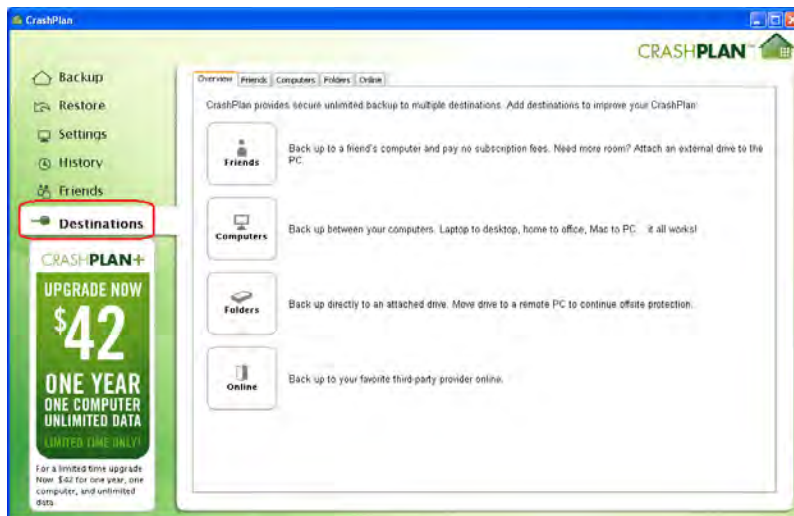
Select the location of the files you wish to back up. In this example the entire *C:* drive is selected for backup.



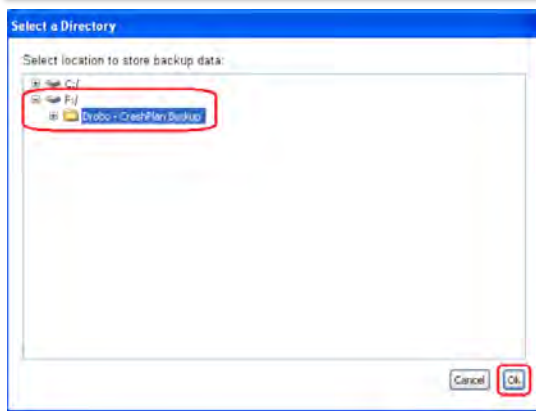
CrashPlan will begin to scan the directory that you selected for backup.

**NOTE:** This full scan will only occur once, when a new backup source is selected.

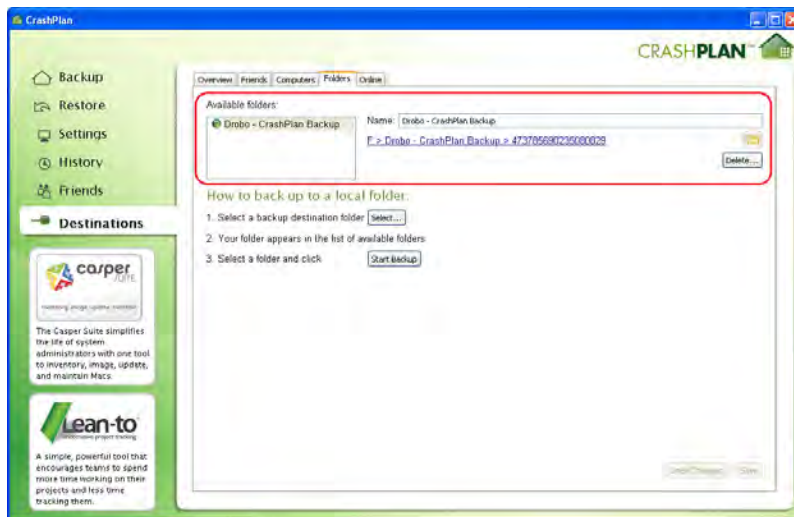
### STEP 4



Click **Destinations** on the left side of the CrashPlan main window to see the following options in the Overview tab: Friends, Computers, Folders, and Online.

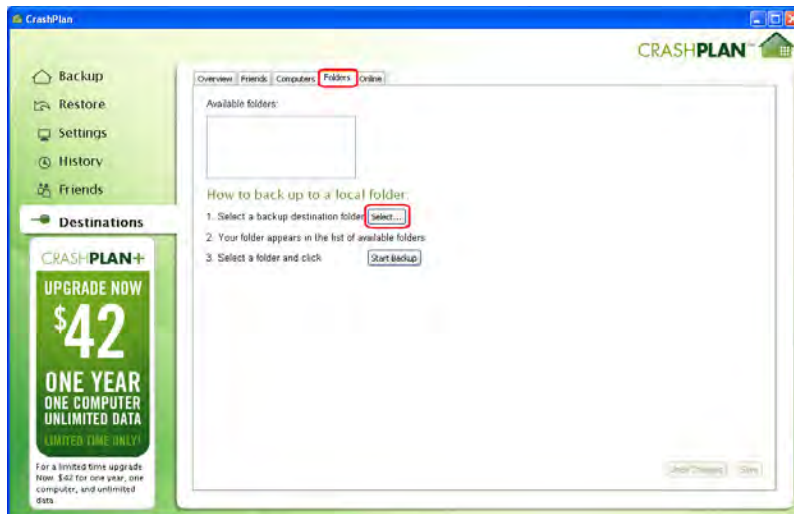


In this example, a folder/directory located on a Drobo storage array titled *Drobo – CrashPlan Backup* was selected for the backup destination.



After you choose a backup destination, that directory will appear under *Available Folders*.

### STEP 5

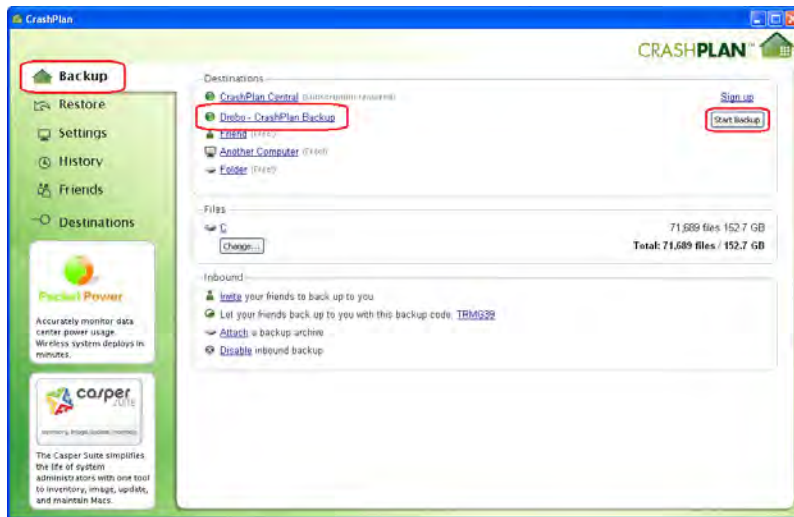


Click the **Folders** tab, and click **Select** to choose a backup destination.

In this example, a folder/directory located on a Drobo storage array titled *Drobo – CrashPlan Backup* was selected for the backup destination.



### STEP 6



Click **Backup** on the left side of the CrashPlan main window. Your newly selected Drobo directory appears under *Destinations*,

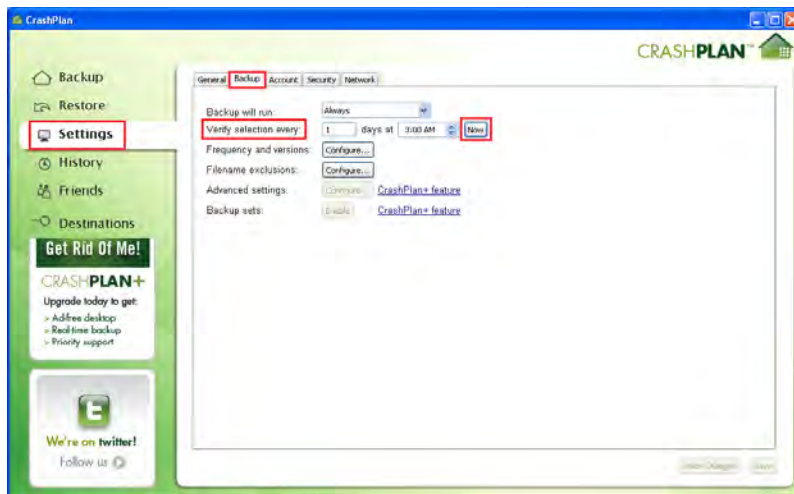
Click the **Start Backup** button on the right side of the window.

**NOTE:** There is only one Start Backup button in this screen. If more backup destinations had been configured, there would be one button to the right of each of these locations.

A new status bar indicates that your backup is underway and displays an estimate of time to completion.

### STEP 7

Once the backup is completed, CrashPlan automatically verifies the integrity of your data based on a predetermined time interval.



To specify when this occurs, navigate to Settings on the left and select the **Backup** tab.

If you want to verify your backup now, simply click the **Now** button.

**NOTE:** CrashPlan sends a Backup Report to the registered e-mail associated with the CrashPlan account every time a backup is completed, verifying that the backup was completed successfully and displaying backup statistics.



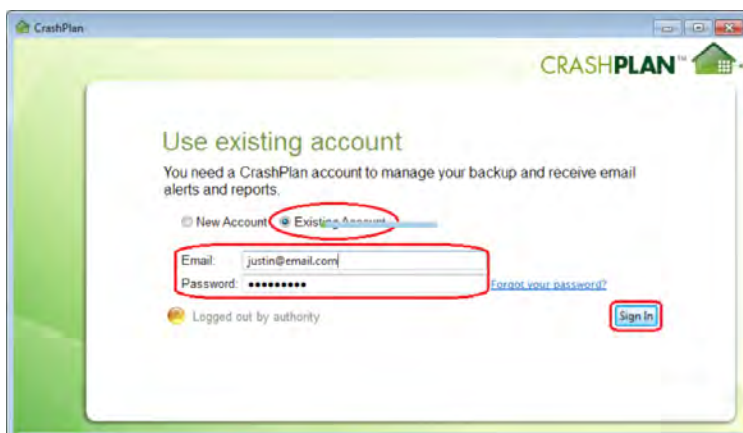
## Backing Up to Another Drobo or Offsite Storage

### STEP 1

After configuration in Steps 1 and 2 (from the previous section) are completed on your primary computer, install the CrashPlan application onto a second computer offsite. In this example, the primary computer is called *Location A* and the secondary offsite computer is called *Location B*.

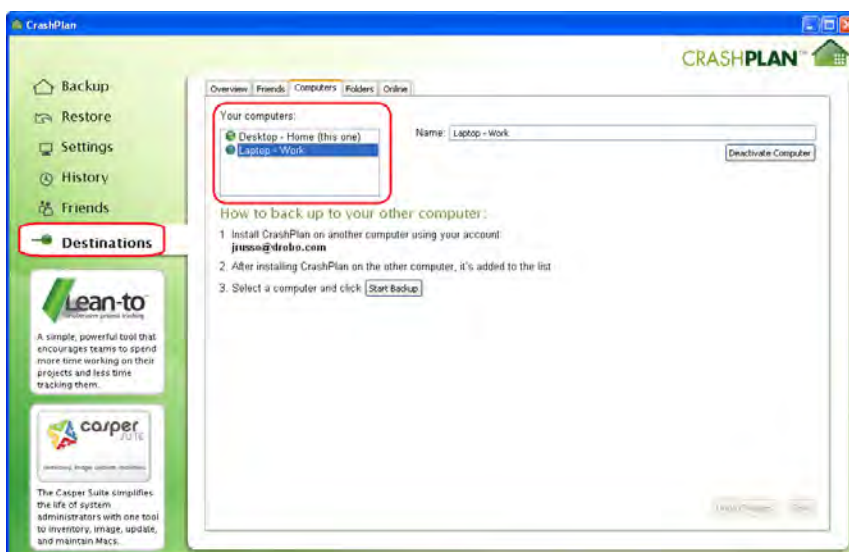
**NOTE:** The computer at Location B can be Mac or Windows; it doesn't have to match the OS used in the previous section.

### STEP 2



Once CrashPlan is installed, use the same user account created in the previous section and repeat Steps 1 and 2 on the Location B CrashPlan account.

### STEP 3

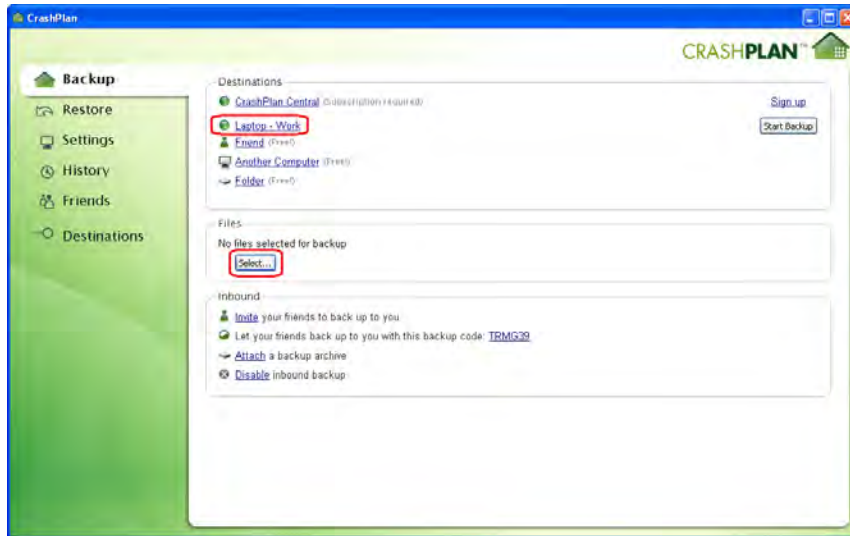


After you have logged in, navigate to **Destinations** and click the **Computer** tab, where both computers are now displayed.

In this example, the user's work laptop (Location B) is added as a backup. CrashPlan is flexible, and any computer displayed in this list can be either a source or a destination.

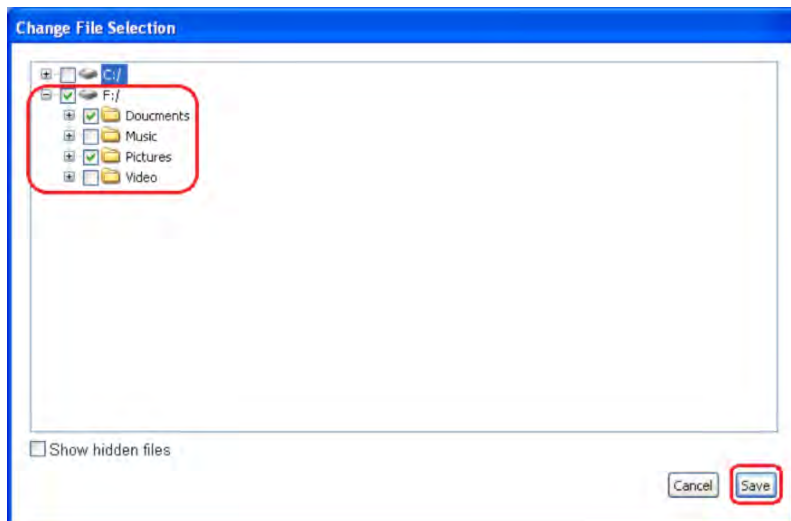


### STEP 4



Each computer will also appear in the *Destinations* window in the Backup section.

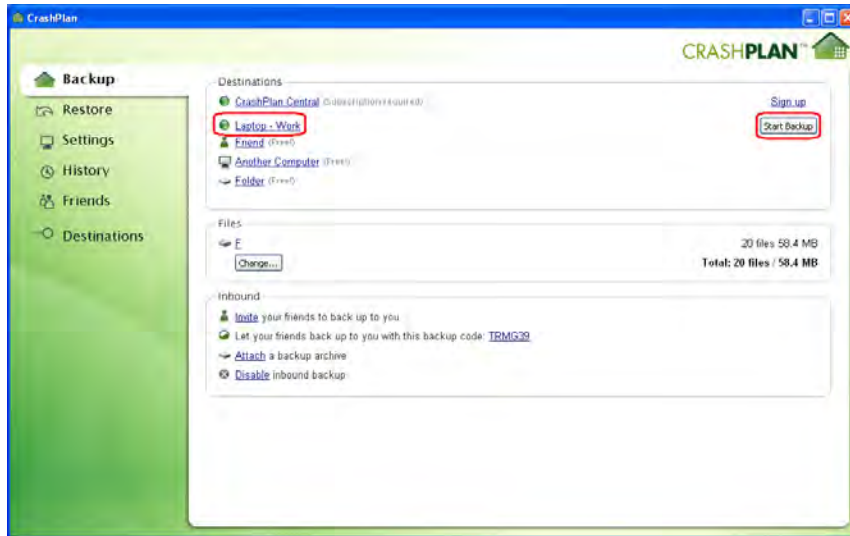
Select files for backup.



In this example the directories *Documents* and *Pictures* stored on the Drobo were selected for backup to a secondary Drobo positioned at Location B.



### STEP 5



To start backing up local data to a destination, click the **Start Backup** icon next to that destination





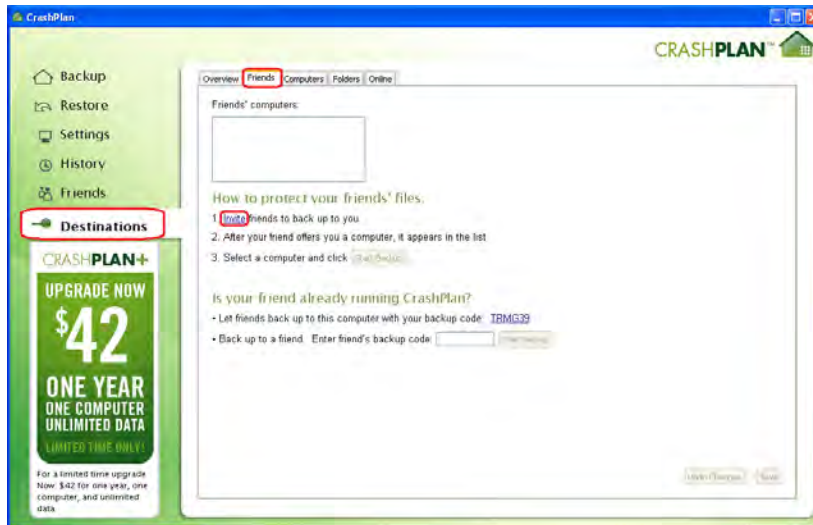
## Configuring Social Backup Between Your Storage and Your Friends

One advantage of CrashPlan is how easy it makes cooperative backup among family and friends. These steps are similar to those in the previous section, where the same user has control of the computers and storage at both sites, but it enables invitations to family and friends to participate in backup. This can be configured in either direction. The high-level steps in this section are:

- Edit and send an invitation
- Back up to your friend
- Enter a backup code

### STEP 1

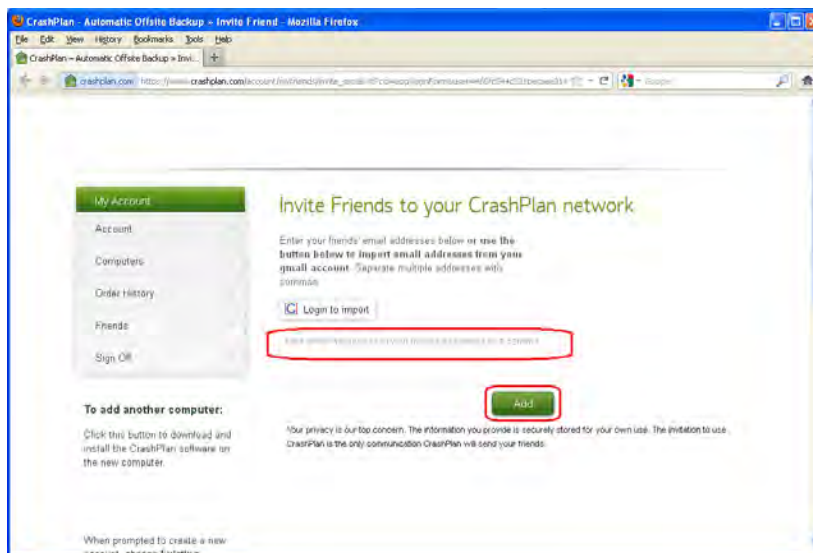
Edit and send an invitation.



Navigate to the Destinations page, click the **Friends** tab, and click **Invite**.

If your friend already has a CrashPlan account, skip to Step 5.

### STEP 2



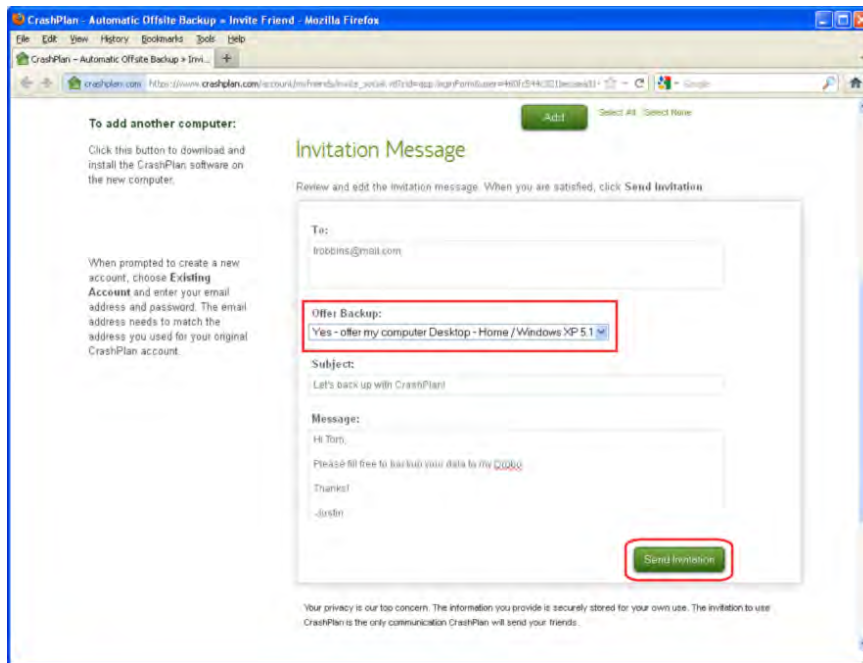
Type your friend's email address in the window; separate multiple addresses with a comma. Click **Add**.



### STEP 3

Next, choose one of the following message templates from the *Offer Backup* list:

- **Yes - offer my computer** to invite your friend to back up to your computer and to request that you be allowed to back up your computer to your friend's.
- **No - I do not wish to offer my computer** to request that you be allowed to back up your computer to your friend's, without inviting the friend to back up to yours.



Once your selection has been made, insert a message and click **Send Invitation**.

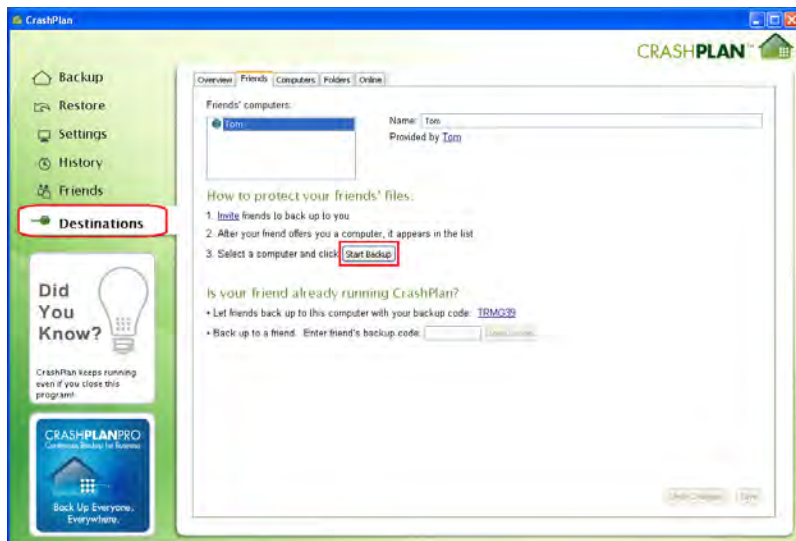
After you send the invitation, your friend will receive a message asking permission to back up to his or her computer. If your friend accepts, you can start backing up to his or her computer.

After clicking **Accept**, your friend clicks the link to the CrashPlan website and downloads and installs the program. When your friend sets up a CrashPlan account, tell your friend to use the same e-mail address to which you sent the invitation. This will connect you to each other.



### STEP 4

After your friend has accepted your invitation and installed and configured a CrashPlan account using the same email address specified in the invitation, your friend's computer will appear in your list of backup destinations. If you want to change the files to include in the backup, navigate to the Files to Back Up section of the Backup tab and click **Change**.

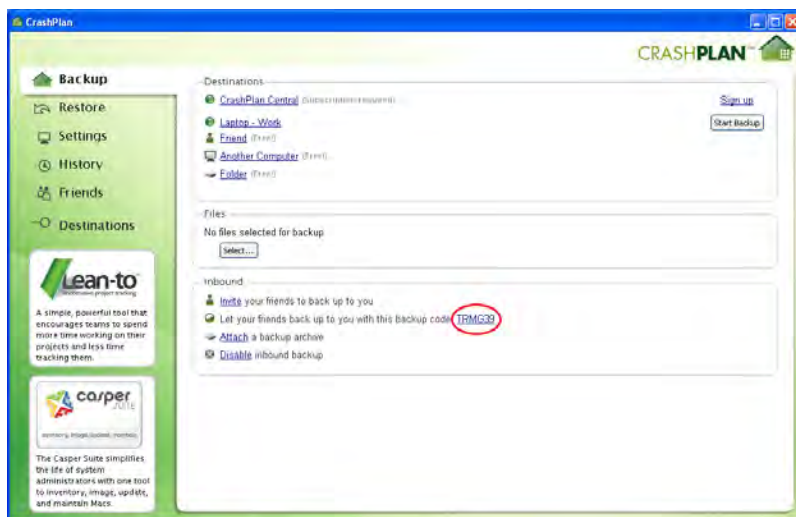


Select your friend's computer and click **Start Backup**.

In this example, the friend, who was invited for backup in the previous step is selected as a backup destination.

**NOTE:** On the Backup tab, you can check on the status of your backup, stop a backup already in progress, or resume a paused backup. Your friend can also go directly to the application or be invited through My Account on [www.crashplan.com](http://www.crashplan.com).

### STEP 5



If your friend is already a CrashPlan user, click the **Friends** tab to view your access code.

This code can be used to allow access for friends to use your Drobo as a backup destination.

Drobo • 2460 North First Street, Suite 100, San Jose, CA • [www.drobo.com](http://www.drobo.com) • 1.866.97.DROBO

Copyright 2012 Drobo, Inc. Data Robotics, Drobo, DroboElite, DroboPro, BeyondRAID, and Smart Volumes are trademarks of Drobo, Inc., which may be registered in some jurisdictions. All other trademarks used are owned by their respective owners.

All rights reserved. Specifications subject to change without notice. • HT-0122-00 • May 2012